

MENZSHED®

NEW ZEALAND Newsletter – July 2018





Welcome to the latest round up of Shed related items from the Executive, and around the country.

National News



The National Conference and AGM 2018 have been and gone, but the memories friendships and inspiration lives on.

MENZSHED NZ Committee changes

	<p>Farewell to Ross McEwan (North Shore). Ross has served as Regional Representative Northland and Auckland since the formation of MENZSHED NZ in 2013.</p> <p>Ross has supported many sheds become established throughout his patch. A great end to his term was involvement with the recent national conference.</p>
	<p>Welcome to Bernie Ward (Auckland East).</p> <p>Unfortunately no bio or pic by publication date.</p>
	<p>Neil McArthur (Alexandra) has also served in this role since the formation of MENZSHED NZ and supported sheds throughout Otago and Southland.</p> <p>We also say goodbye to Mrs McArthur, Neil's IT specialist who made sure video and audio were operational during our monthly meetings 😊</p>
	<p>Welcome to Ian Miller from Taieri Blokes shed - one of NZ's first sheds. Ian is already known amongst sheds in the region.</p> <p>At the 2018 conference Ian agreed to consider his patch of the country hosting the 2020 conference.</p>
	<p>Ray Hall has resigned as national chairman. Ray has served in this role since 2013 and is well known amongst many sheds for his support during and following the establishment of MENZSHED New Zealand.</p> <p>Ray has also been the man behind creation of our national website and a sophisticated database of sheds used for all manner of useful back office activities. More recently, he established the Facebook MENZSHED NZ Forum.</p>
<p>The MENZSHED Executive are seeking a sheddie with the necessary skills who is willing to take on the role of Chairman. Information about the process was sent to all sheds on 5 July, so interested sheddies ought to contact your shed Chairman or Secretary to learn more.</p> <p>We are still seeking a sheddie for the Regional Representative's role covering sheds in Tasman, Nelson, and Marlborough.</p>	

2020 - The Taieri Blokes Shed was asked if they would look at organising the 2020 AGM and conference.

YES, they have accepted that challenge with the support from other local sheds.

Its going to be held at St Hilda's Collegiate School, 12 Tolcarne Street, Maori Hill, Dunedin

The photo below is where it will be. **THE DATES, 17TH, 18TH, 19TH, APRIL 2020**

The hostel can sleep up to 130, with single, double, triple rooms with communal bathrooms, the lower floor has a large dining room, come meeting room, it's all under one roof.

The view from this building overlooking the Dunedin City and South Dunedin is spectacular.

By then there will be over 100 member sheds round the country, imagine if we could have 1 representative from each shed, what a goal that would be.

I challenge you to start putting your teams together. Much more information will follow as time gets closer. Just book the dates into your diaries now. Ian Miller



CHARITIES SERVICES

Many sheds, whether an Incorporated Society or a Charitable Trust, are registered with Charities Services. The usual reason is for tax exemption and improved access to grants.

Registration requires ongoing reporting obligations to CS, but that isn't onerous, especially after the first year when you can reuse information for annual reporting.

CS recently ran Webinars to assist officers of organisations understand their obligations. Allow about 40 minutes to watch these videos on Youtube.

[The benefits and obligations of being a registered charity](#)

[Good Practice in Grant Management and Reporting](#)

Shed News Region 1

Boomer Business Booming



Boomer Business.
COMMUNITY SHED

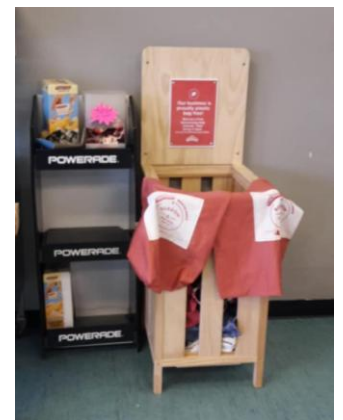
A multitude of community projects flowing in and out our doors.

Metalwork projects on the go at present are restoring metal window grates in an historical building in our beautiful Totara Park in South Auckland, ongoing upcycling of old shopping trolleys pulled from South Aucklands Puhinui stream and trophy creations for one of our High School Science expos named TIAKI.

One woodwork project has been very topical of late ... Our gents have been creating Bag Display boxes and Stands to support Sustainable Papakura and Beachlands with their Boomerang and Borrow & Return cloth bag policy for grocery shopping. They are trying to make a difference out there and alert more people to the fact that plastic bags are killing the wild life in our oceans. We support this wholeheartedly.



Shopping trolley love seat



Shed News Region 2

Send us some news for the next newsletter

Run-down caravan gets a new lease on life

Rosalie Willis

You name it, they do it. Menzshed Kāpiti has been involved in numerous projects since 2010.

From rat traps to Santa's sleigh, from park benches to Anzac crosses, they've done it all.

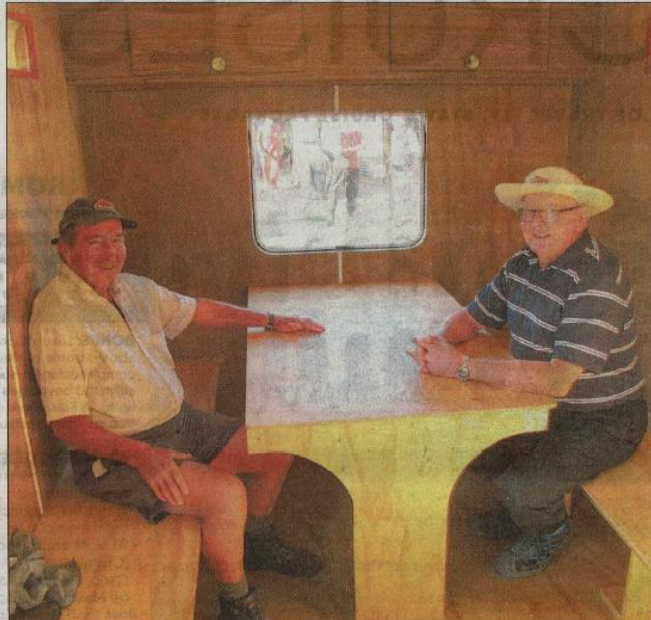
Working with community groups, charities, schools, councils and your average local who walks in off the street, their latest project has been restoring an old caravan for Whareroa Farm to be a hub for walkers and bikers, providing shelter and a place to take a break.

Originally located on Kāpiti Island since 1980 where it was lived in by a Department of Conservation ranger for three years, it became run down and was relocated to Whareroa Farm in 2012.

"The caravan was pretty lacklustre," Menzshed Kāpiti treasurer Peter Blackler said. "They wanted it restored, so it came up to the shed and over the last 12 months we've been working on it. It's been mainly two guys the whole time."

They have lined the inside with plywood, fitting it out with seats and a table, replaced door and window fittings, and primed the outside ready for artist Julie Oliver to paint a mural on the outside.

The trust decided that the designated location was too close to the fence, so it was changed with a more open location and new foundations



RELOCATED: The caravan being moved back to Whareroa Farm after being restored by Menzshed Kāpiti.
PHOTO: KAP040518SPLCARAVAN

RESTORED: Brian Devane and Fred Borrett from Menzshed Kāpiti relaxing after all their hard work.
PHOTO: KAP040518SPLTABLES

prepared.

After the caravan arrived at Whareroa Farm on April 27 a deck has been attached with Menzshed Kāpiti creating tables and benches.

"We wanted to try and get it restored so the guys from Menzshed have been doing it up

for us," Whareroa Guardians Community Trust secretary Ann Evans said.

"It will create a nice little area once it's finished."

With many projects on the go the Menzshed guys' to-do list is always lengthy but a cuppa and a scone always has high

priority.

"Mental health is a big focus for us," Peter said. "Many of our wives have been involved in the Kāpiti community for years but a lot of us commuted into Wellington every day for years and years and don't actually have many connections or

friendships up here."

On Tuesday and Thursday mornings, the shed is not only about getting projects done but is a place where men who might have been working fulltime since their youth can come and connect with other men in a supportive environment.

MENZSHED FEATHERSTON



Rod is continuing the manufacture of wooden toys for his innumerable grandchildren. We've seen all manner of trucks and breakdown vehicles in the past, but now there's something new coming off the production line in the form of Landrovers.

MENZSHED FEATHERSTON

Richard continues his good work at the shed with the recent completion of the Featherston Fresh Food Pantry at the Medical Centre. This facility will allow the exchange of food from those with a surplus to donate to those facing a shortage.



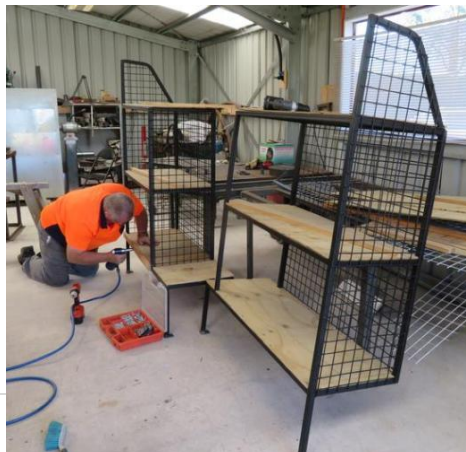
Shed News Region 4

Rolleston Men's Shed

Following on from the extension to the woodworking shed, a grant has been received from the Rata Foundation for the purchase of new machinery. This will be followed by training members and checking for safe usage. The computers now have their own room making the meeting room just that little bit bigger for the steady influx of new members and for other clubs to also use it for meetings.

Why a computer room? With so much information available via the internet and then the ability to print out plans or draw up designs for projects, computers are simply just another tool. This also means, teaching members how to use such tools or upgrading their computers. Fortunately all the programmes we use are genuinely free and often do the job much better than commercial software.

A recent job has been fitting shelves to the fire brigade's van for the carrying the smaller items that are always needed.



So from the latest technology to servicing of a 65 year old sewing machine, surrounded by the traditional skills of building and woodwork. Where else can one find such a range?
Most importantly we make sure there is time for a cuppa, a good yarn and discussion of what, why and when.

Details about the shed can be found at <https://rollestonshed.wordpress.com/>

Bishopdale Menzshed

We have also been involved in a joint project “The Monarch Community Garden” with a local church and WINZ, installing planter boxes made by Sheddies for the local Housing NZ residents to use. Photo Dave Crawford and Lance Saunders



Shed News Region 5

Since coming home from a great National Menzshed Conference things have been busy. THANK YOU for supporting my nomination to become your Regrep 5 for the Southern Region. Looking forward to the challenge. In this region, 2 new sheds have started up. Lumsden and Green Island. both are small but will grow as the community sees the benefits the sheds give to the community.

Also 3 other towns are enquiring to gauge interest in forming Menzsheds which I am sure will happen as I will follow that through.

I believe that some other towns in this region have a possibility to form sheds also.

The Alexandra Mens Shed are still waiting for the last funding grants to be approved before they can start building their new shed, much larger than their old one. this could be a template for future shed in N Z. To justify the size and cost they will be open most days of the week. They are two-thirds towards there target.

The Taieri Blokes Shed is celebrating there 10th Anniversary on the 11th July with a upmarket morning tea. most of our original 1st year members are still active in the shed today.

Mr Phil Bradshaw of the Royal Navy, who first bought the idea to Otago, is hoping to be in attendance weather permitting, plus all our original supporters and sponsors over that time.

To communicate the occasion, The Taieri Shed is offering to build a commemorative bench seat and donating it to the local Community Board to be suitably placed in Mosgiel.

By the Invercargill Mens Shed newsletter they seem to be very active and progressing well. Maybe, we all need Tim Shadbolt as mayor. That's all from RR5. Ian Miller

Shed News Region 6

MOTUEKA MENZ SHED The past few months of autumn leading into winter have been characterised by two significant developments. The first is that following the acquisition of a lot of new machinery last year and setting it to work, members have gradually become more proficient in using this equipment. A competence and safety programme underpins the operation of all machinery thus giving confidence to engage in a widening array of projects not only for community groups but also for members and their own particular endeavours.

The second development is satisfying the desire and intention of MENZSHED Motueka to assist local organisations. For example, the local Branch of the Riding for the Disabled organisation required the modification of a shipping container for the stowage of saddlery and associated equine equipment. Firstly the container had to be shifted to our premises and to be within range of mains electricity for the provision of power before any alterations could be made. The plan required the installation of the interior with timber framing to support a complete plywood lining. However, the timber frames required metal lugs to be welded to the walls and the top – but welding damages the paint both inside and out, so each weld had to be carefully wire brushed, primed and painted on internal and external surfaces. The guys made the internal framing and secured it properly to the newly fixed lugs before attaching the plywood lining. The RDA supplied much of the material but our Shed provided all those hidden extras and the necessary expertise to complete an extremely practical asset for a most worthwhile community group.



Another project required the construction of a rustic bench seat to be installed near the Jack Inglis Community Hospital. Part of this plan centred on a commitment to build the bench as a means of recording thanks for the donation of some machinery to the Shed by a member. The bench itself is constructed from the Jarrah stretchers found at the top of redundant telegraph poles. The timber we used was extremely weathered and covered by lichen and other growths but this *impedimenta* responded well to the enthusiastic use of wire brushing and similar techniques.

Assembly of the bench did not present too many problems – galvanised bolts hold it together – and it looks as if the timber will last for many years to come. The whole assembly is rather heavy and requires a six man lift to shift it. Nonetheless, the end result is an attractive and appealing utility on



which to rest whilst perambulating a route around the outside of the hospital. The bench complete with a presentation tally will be concreted into the pavement in a couple of week's time.

Notwithstanding the somnolence of Winter there is a steady hum of activity in MENZSHED Motueka with lots of interesting things on the go. No doubt things will speed up as Spring gives a lift and enervates us all to enjoy our Shed and what we do even more.



International News



<https://youtu.be/fFZn3zoMW54>

Hi Shedders around the world.

The Coolum Men's Shed have just made a video to tell the world how good it is to go to a Men's Shed.

Many older blokes find life in retirement a struggle and often need a place to go to meet others and find new purposes.

If you could please promote the cause we would appreciate you sending this link to all your members and post onto facebook pages as well. Ask your friends to share so other men may see the Mens Shed as a fun place.

Thanking you, Paul Nicholas, Coolum Mens Shed

The 10 Healthiest Small Changes a Man Can Make

1. Always Eat Breakfast
2. Exercise the Core
3. Eat a Fruit or Vegetable with Every Meal
4. Exercise Banishes SADness
5. Munch on Berries
6. Make Two Cups of Coffee The daily limit
7. Go Bananas
8. Eat Fatty Fish
9. Build a Happy Relationship with family and friends
10. Help Others – Go down to the Mens Shed
11. You are You, be happy



Did you know?

If your Mens Shed has an unusual or interesting project on the go, you can send us a short article and photo for the next quarterly edition of the National newsletter to your Regional Rep or the Editor at– support@menzshed.nz

Thank you for your support

The Shed Magazine is an ongoing supporter of Mens Sheds in New Zealand by offering member sheds a one year free subscription to the magazine and through publishing a listing of contacts for member sheds around the country, making it easier for folks with tools or materials to spare to find their nearest Mens Shed.

From time to time you will find some great articles written about some of our member sheds too.



One more

Join in to promote what your shed and what its members are doing informally by way of teaching and learning.

We know of Mens Sheds who have been part of previous Adult Learners Week promotions, and their members have received recognition for their efforts as learners and as teachers (typically what goes on in Mens Sheds everyday) or they have just held an open day.

Adult and Community Education (ACE) Aotearoa the lead agency for community education in New Zealand is again running a Festival of Adult Learning (formerly Adult Learners' Week) in the first week of September 3-9 to celebrate adult learning and encourage people to have a go at learning something new.

We would love the Mens Sheds around the country to join our celebration. Some sheds are already on board with plans for open days or special events but it would be great if every shed did something special. If you could promote the celebration, we would be most grateful.

Some funding is available for events and activities.

There is a lot of information on the website www.aceaotearoa.org.nz/events/festival-adult-learning or contact me direct.

Mary Gavigan

Ph 04 971 4416

Mob 021 058 8768



The Aims of the Festival of Adult Learning Ahurei Ākonga are:

- To celebrate the efforts, achievements and contributions of adult learners, educators and providers at both regional and national events
- To strengthen adult and community education and raise public awareness of the rich variety of learning opportunities for adults
- To widen access to learning opportunities and encourage more people to seek advice and guidance about returning to learn
- To foster collaborative and cooperative networks and pathways among those who share an interest in adult learning